

The logo features a stylized white icon resembling a speech bubble or a stylized 'P' with a yellow circle in the center, positioned to the left of the text.

PARADISE
A R K

Developed by:



METROSCAPE
DEVELOPMENT COMPANY

Overview

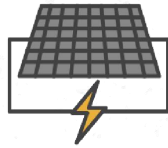
PARADISE PARK is an exclusive development of serviced plots of land located at Lakowe, right behind Mayfair Gardens and within proximity to a clean beach and sharing boundary with Lakowe Lakes Golf & Country Estate.

It's very close to the proposed Coastal Road Project linking to Lekki area, which serves as an alternative route to the Lekki-Epe Expressway.

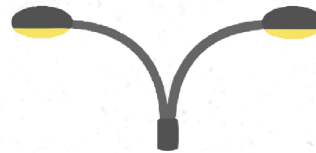
The documentation on the land is a C of O and a Deed of Assignment is issued immediately after purchase.



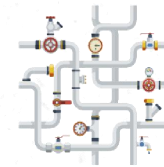
Estate Features



Efficient Power Supply
Through IPP



Street Lights



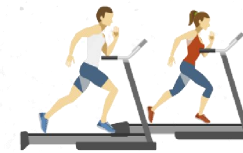
Good Drainage
System



Green &
Water Play Area



Good Road Network



Gym, Club
and many more...

Benefits

Highly discounted price for limited plots

One year complementary access to a golf course

Complementary access to a private beach house

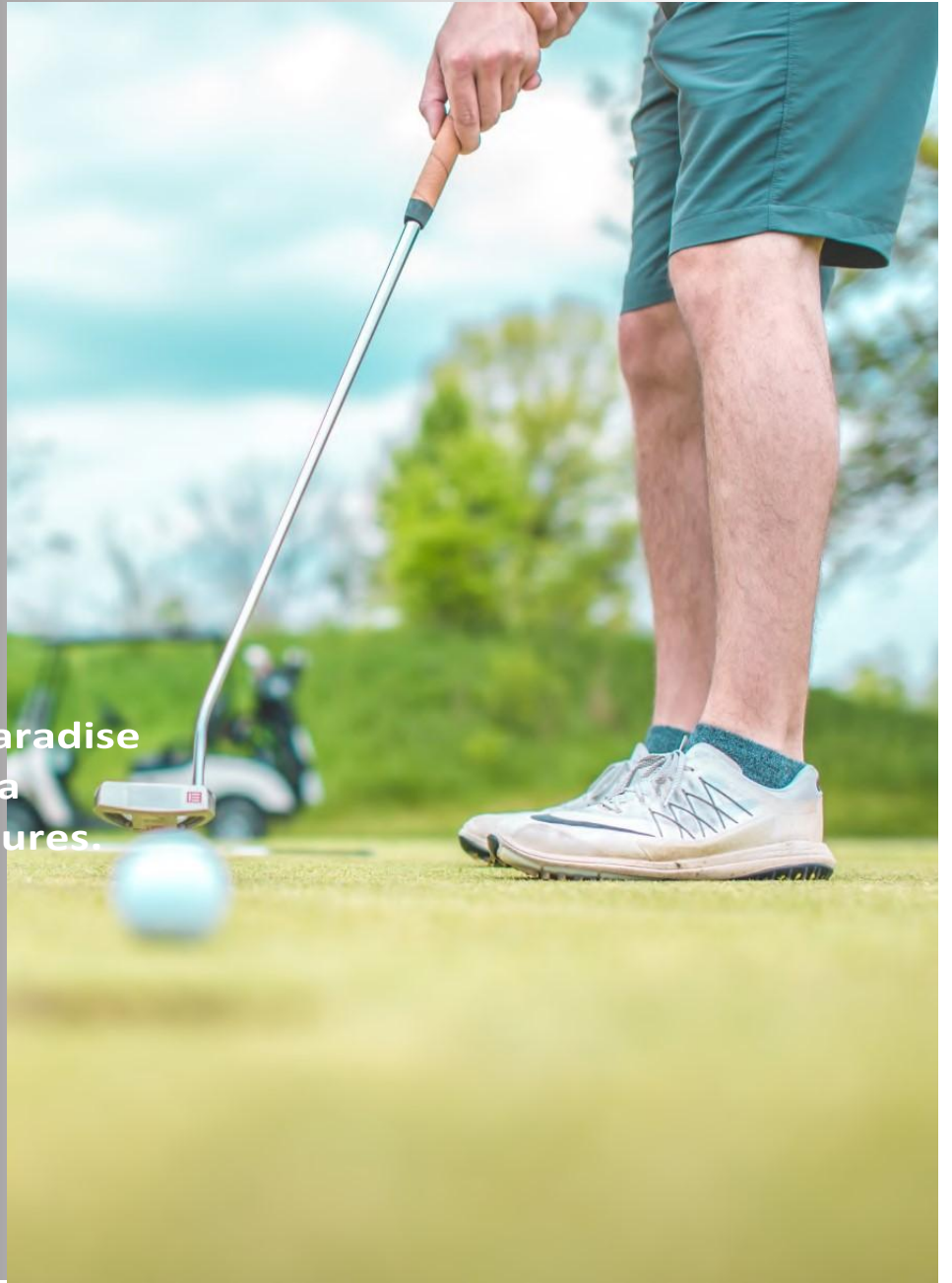
High Capital Appreciation (up to 100% ROI within 3 years)



**Paradise
Park Estate**

1 Year Free Access to a Golf Course

One of the most intriguing features about Paradise Park is a year free access to a golf course as a resident, comprising of all premium golf features.





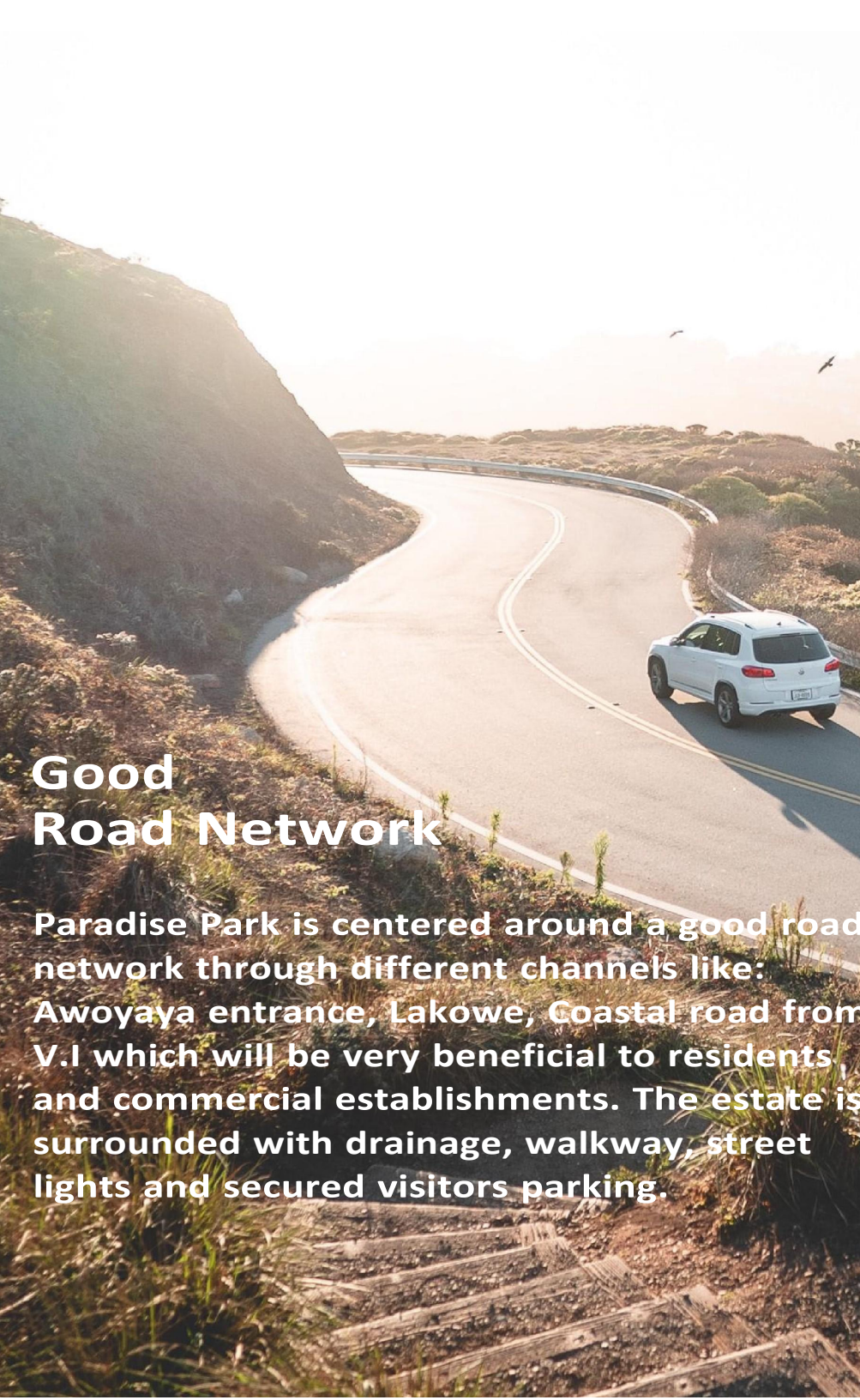
Paradise
Park Estate



Club House & Game area

Paradise Park is equipped with a modern house and a game area designed to provide an environment that facilitates indoor and outdoor fun for both children and adults.





Good Road Network

Paradise Park is centered around a good road network through different channels like: Awoyaya entrance, Lakowe, Coastal road from V.I which will be very beneficial to residents and commercial establishments. The estate is surrounded with drainage, walkway, street lights and secured visitors parking.



Paradise Park Estate

Dedicated Power Supply

The importance of Power Supply cannot be overlooked as it is essential for residents and commercial businesses. Paradise Park is adopting a more reliable power supply to help improve the lifestyle of residents and help contain additional power capacity burden.



**Paradise
Park Estate**



24 Hours Security

The estate has been designed to ensure 24-hours security by installing CCTV cameras in strategic locations with video entry and fire alarm systems within and outside the estate to improve real-time surveillance on estate activities and operations.

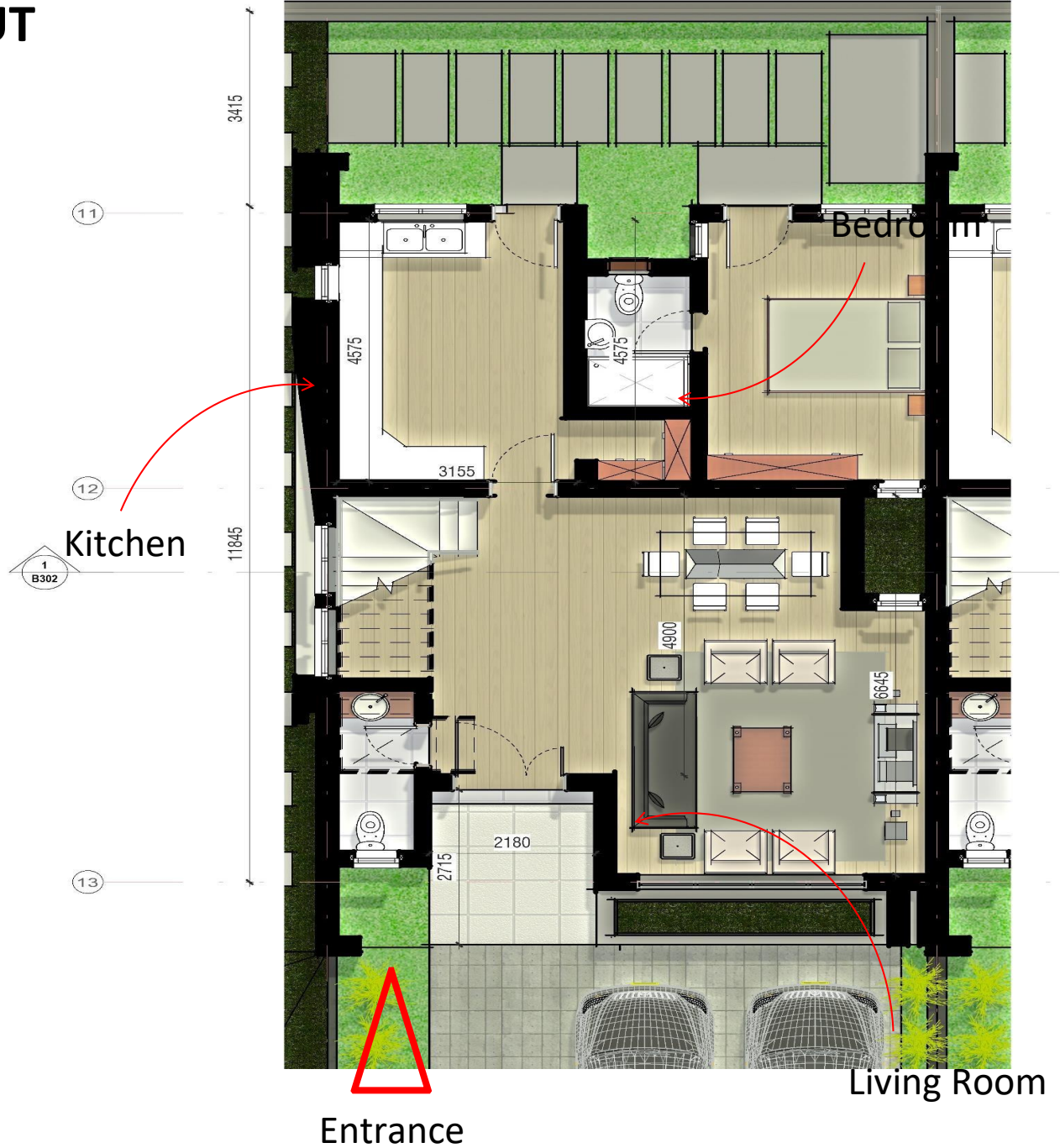
**Paradise
Park Estate**



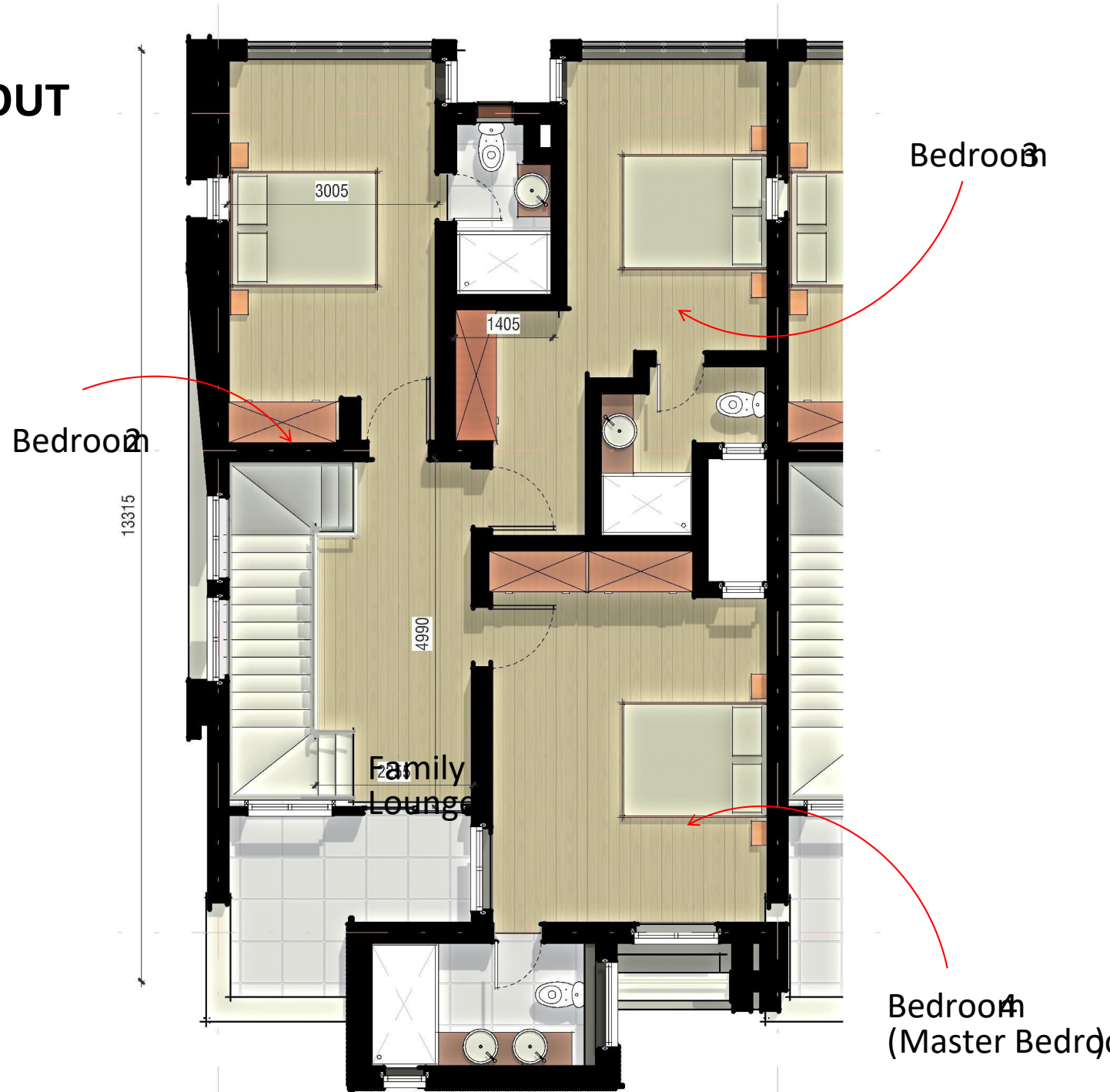
Access to a Beach House

**Paradise Park offers you an access to an
beach house which can be used as a vacat
second home for residents**

GROUND FLOOR LAYOUT



FIRST FLOOR LAYOUT



TERRACE AXO



APPROACH PERSPECTIVE



STREET PERSPECTIVE







