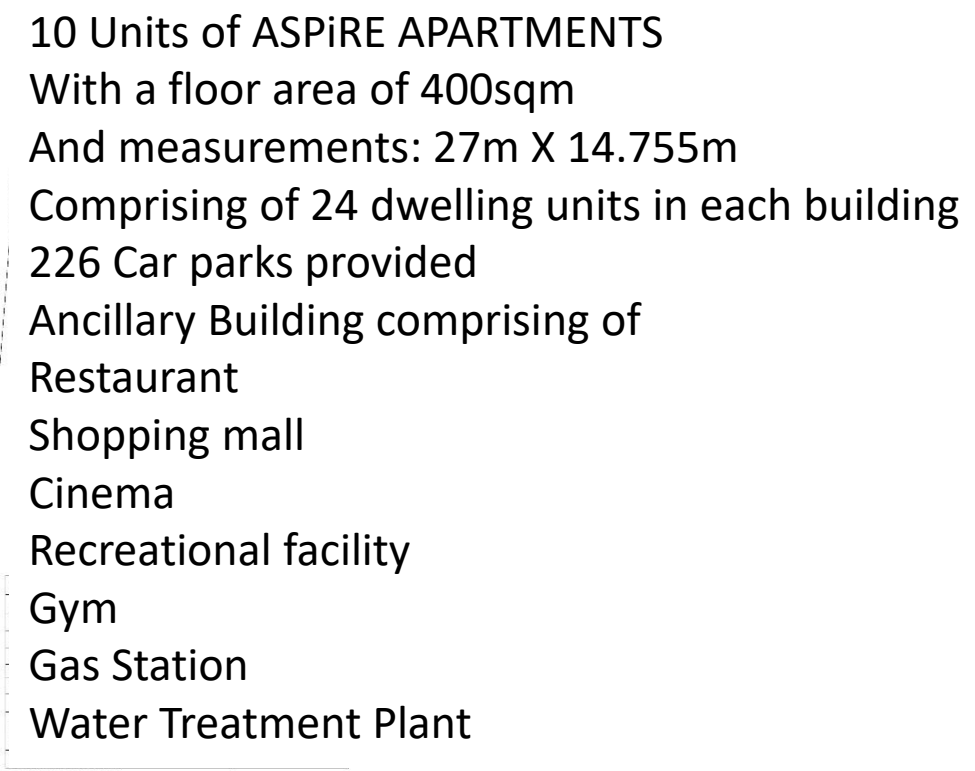


ASPiRE APARTMENTS

The Project-**ASPiRE™** Apartment is solely a Green Building initiative (EDGE certified) and targets Leadership in Energy and Environmental Design (LEED) Silver Certification, that will be globally recognized for achievement in high performance, best-in-class technology, and incorporates features to make the building more sustainable. The 6 floors (G+5Levels) sited on 12,000 sq.m space of a standing structure of, having 12 prototypes with the detailed requirements with a provisional layout approval from the Local Authorities. The construction document has been developed through meetings with key stakeholders and appropriate consultants. **ASPiRE™** Apartment is to accomplish affordable housing to aid housing deficit within the metropolis. It will provide a modern space for the largest midrise operation in Ajah axis, including improved serviced apartments, car park and concierge as well as home-offices, cafeteria, multipurpose room, recreational facilities, stores, entrance pavilion, parking area and a utility building.



[illegible]

Water Treatment Plant

Water Treatment Plant

ASPiRE APARTMENTS



ASPiRE APARTMENTS



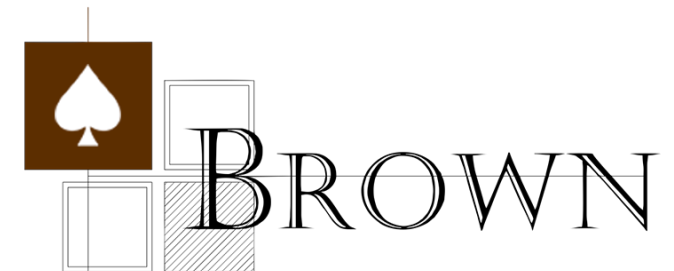
ASPiRE APARTMENTS



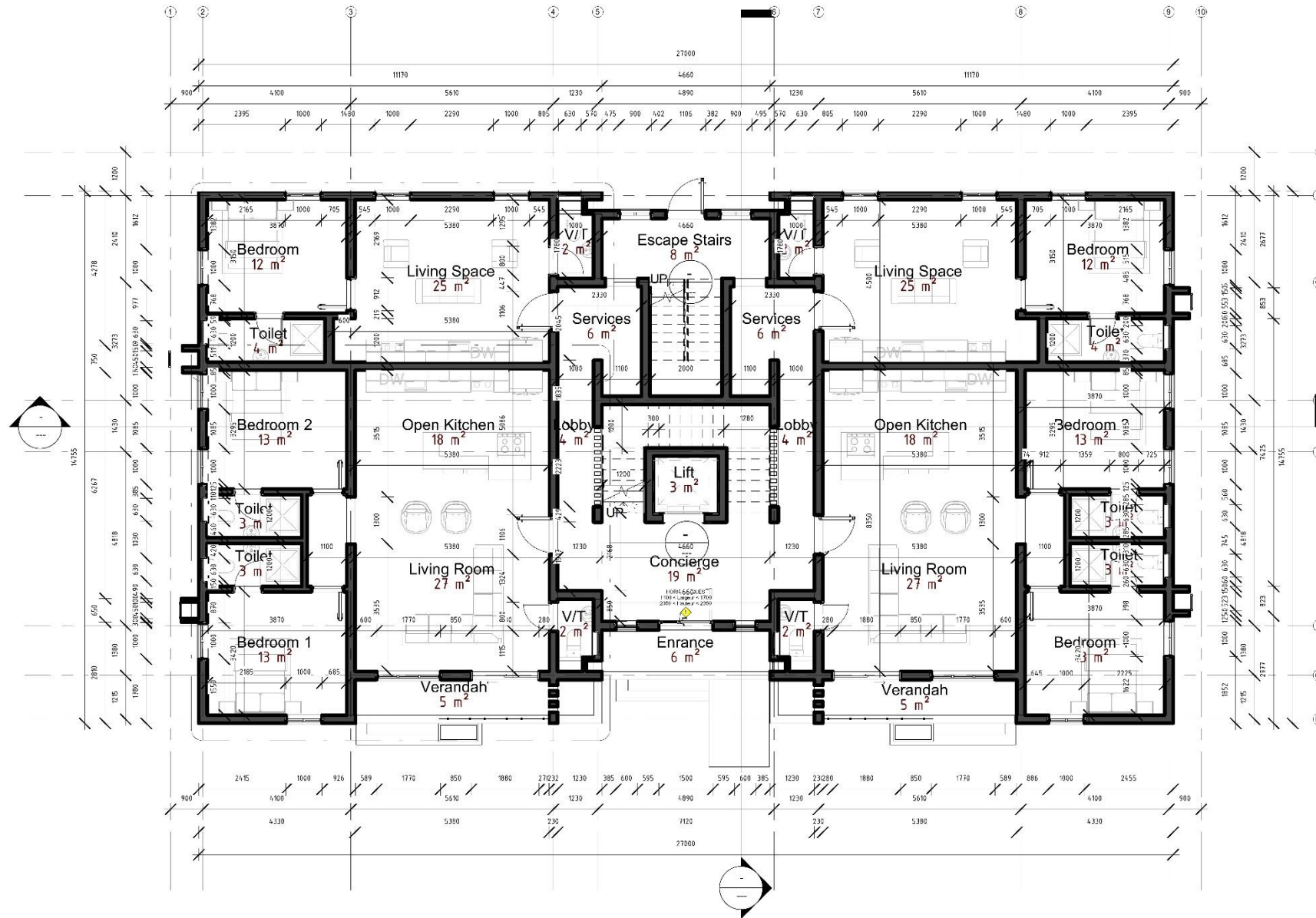
ASPiRE APARTMENTS



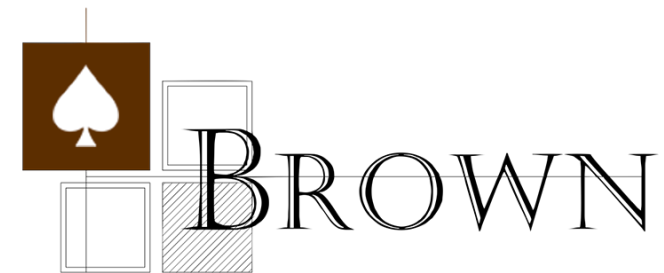
ASPiRE APARTMENTS



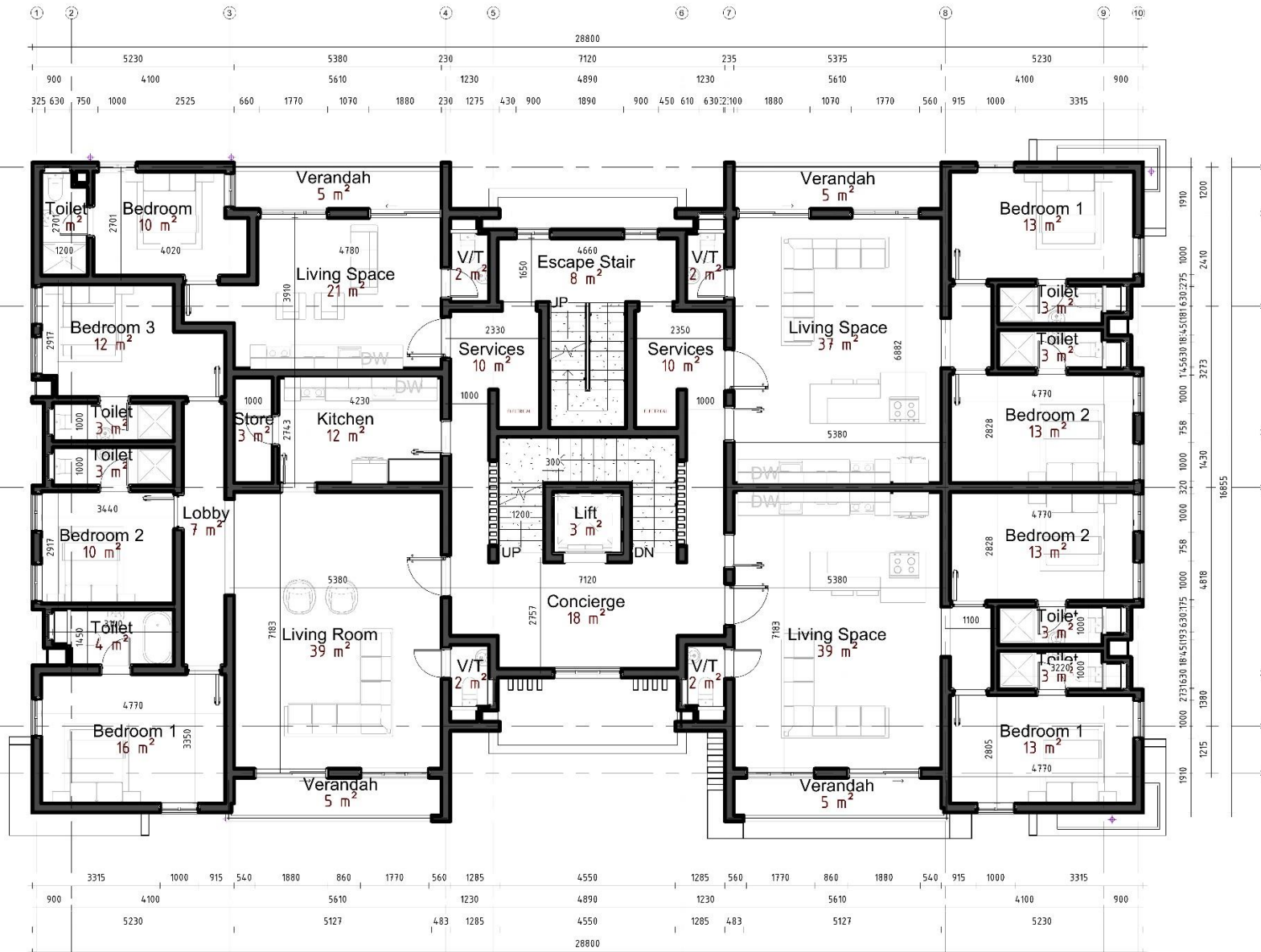
ASPIRE APARTMENTS



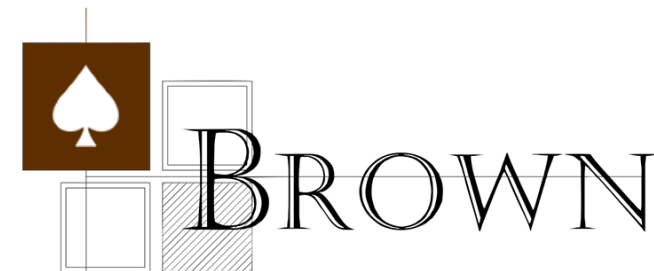
GROUND FLOOR



ASPiRE APARTMENTS



FIRST -FIFTH FLOOR



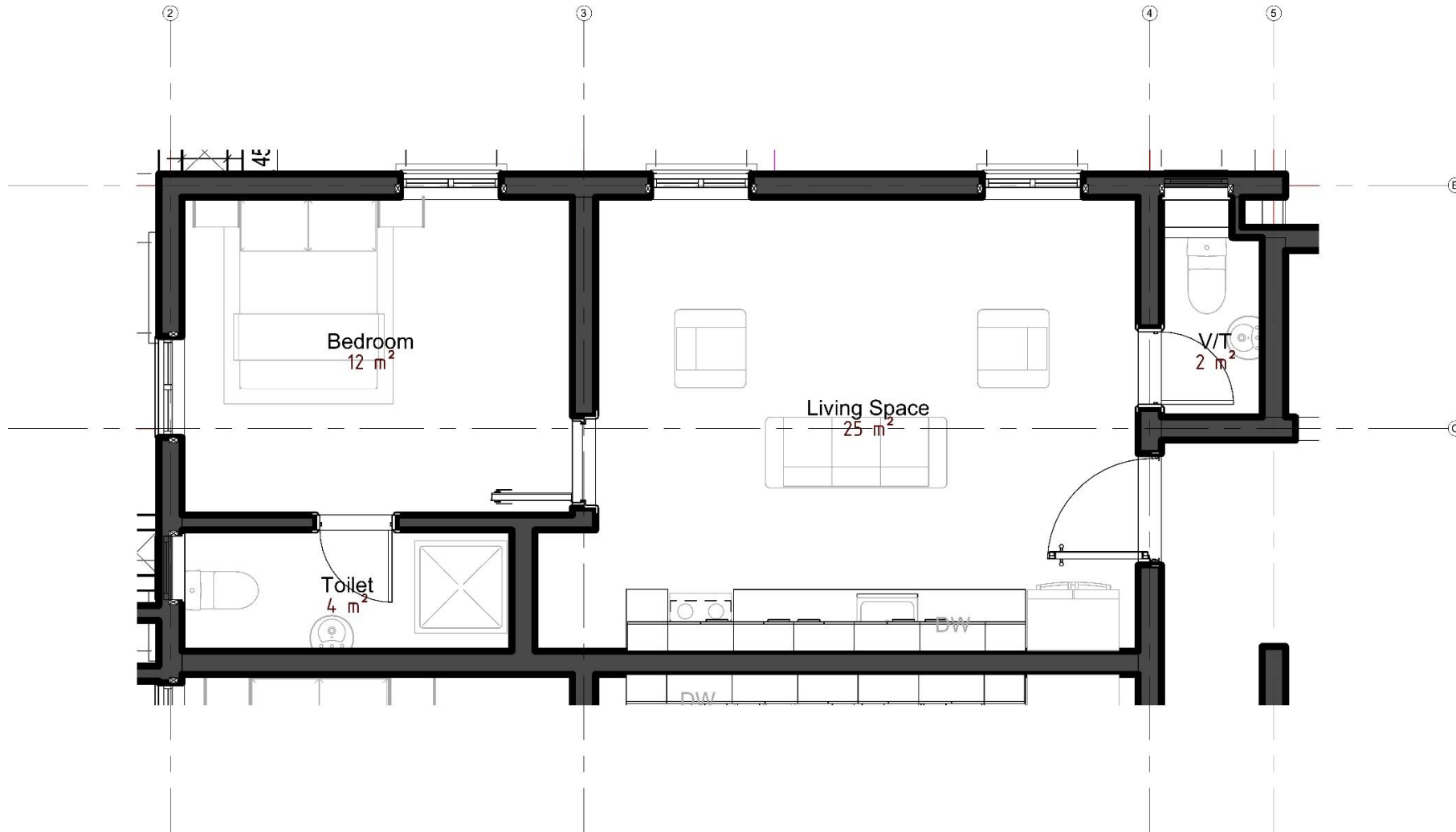
ASPiRE APARTMENTS



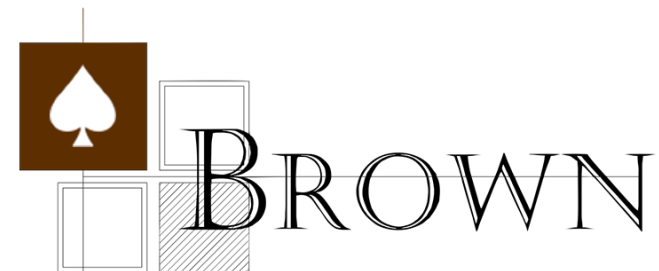
ASPiRE APARTMENTS



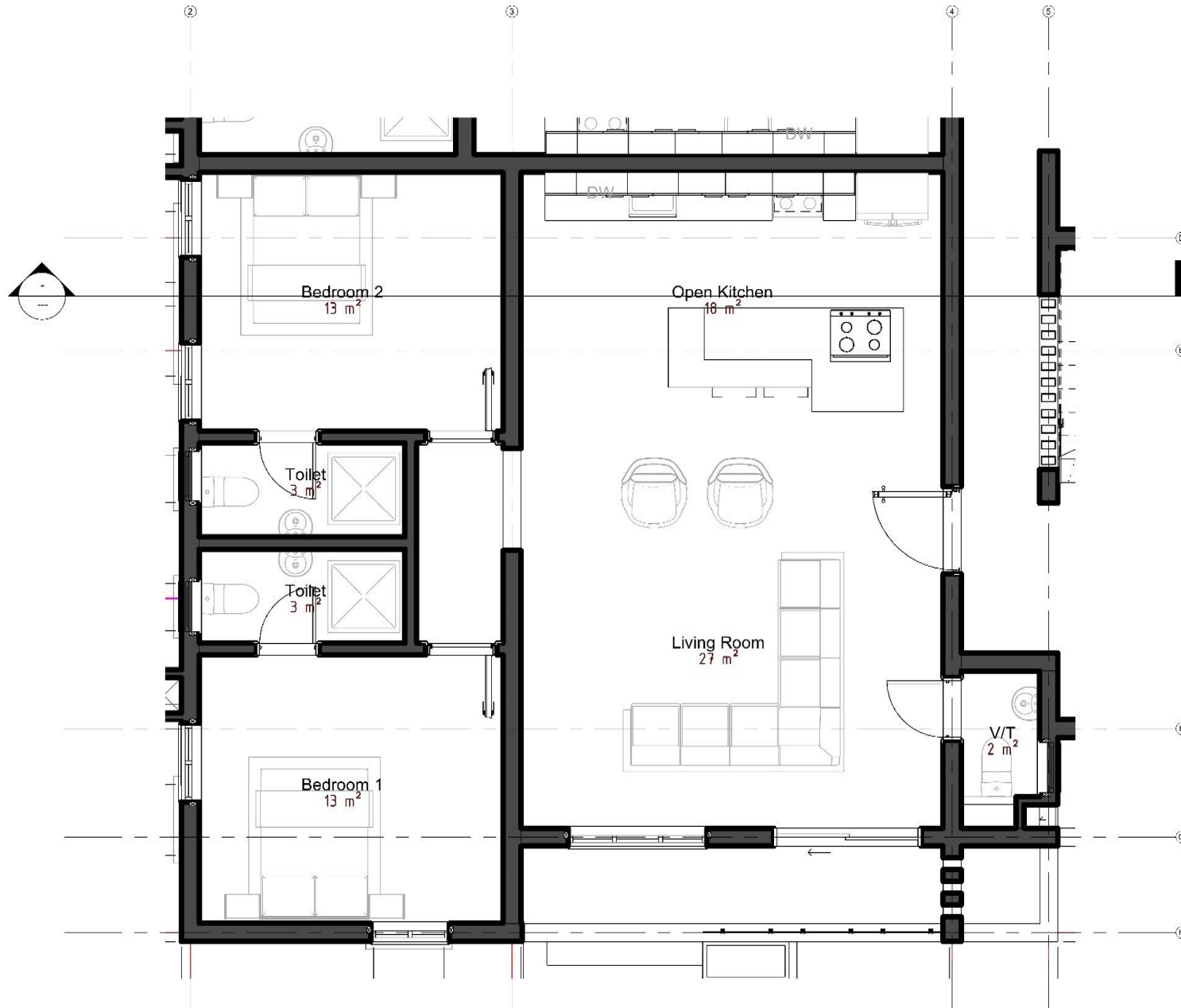
ASPiRE APARTMENTS



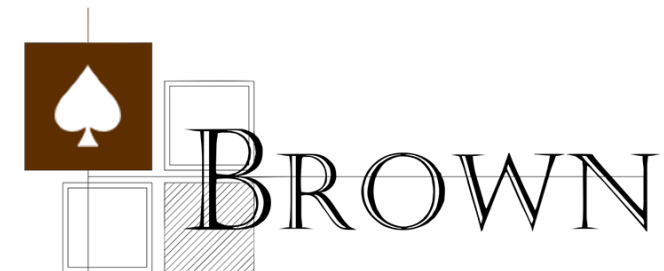
Callout: one bedroom
apartment on the Ground
Floor



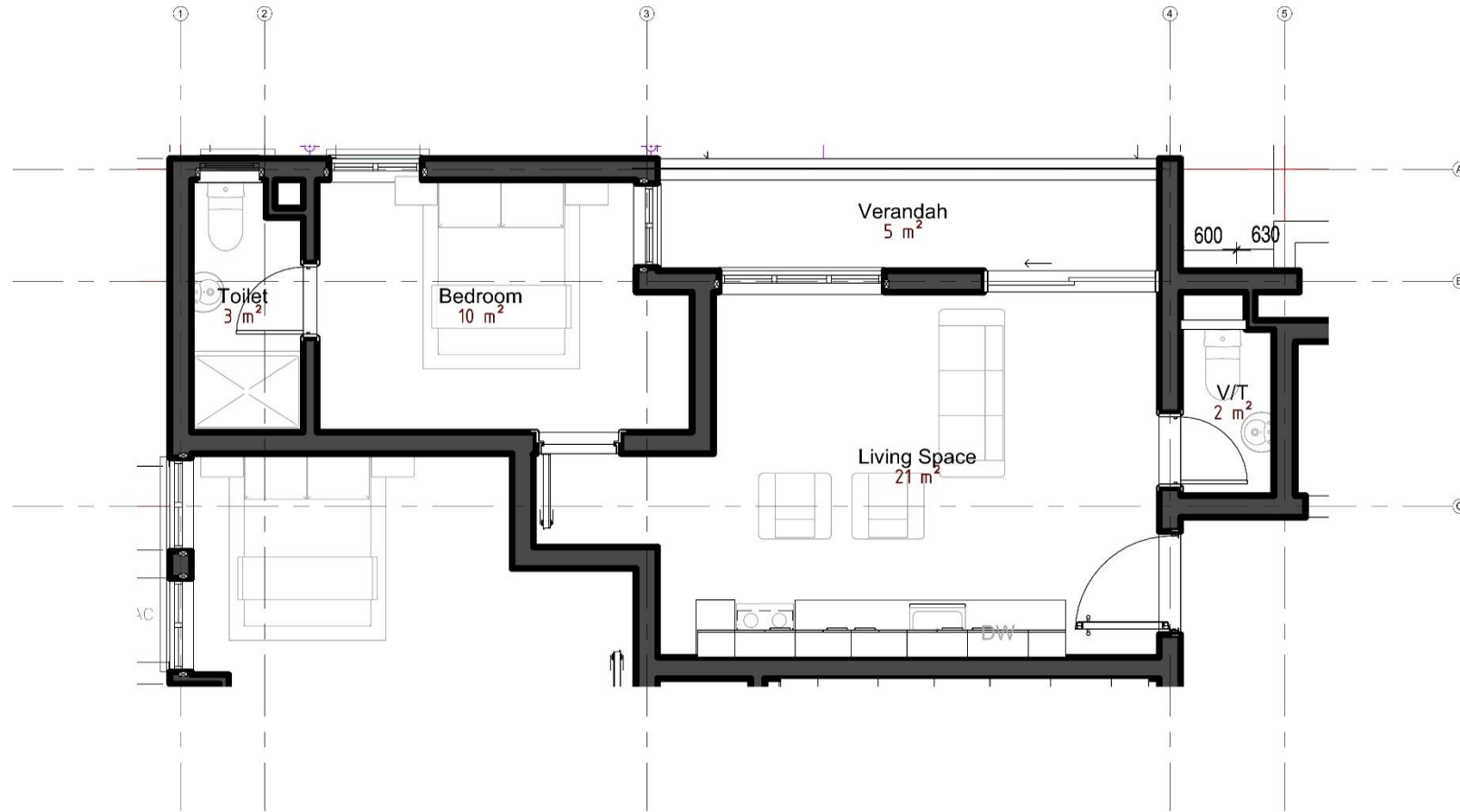
ASPiRE APARTMENTS



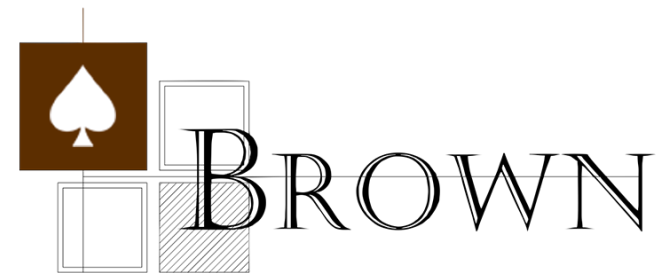
Callout: Two bedroom
apartment on the Ground
Floor



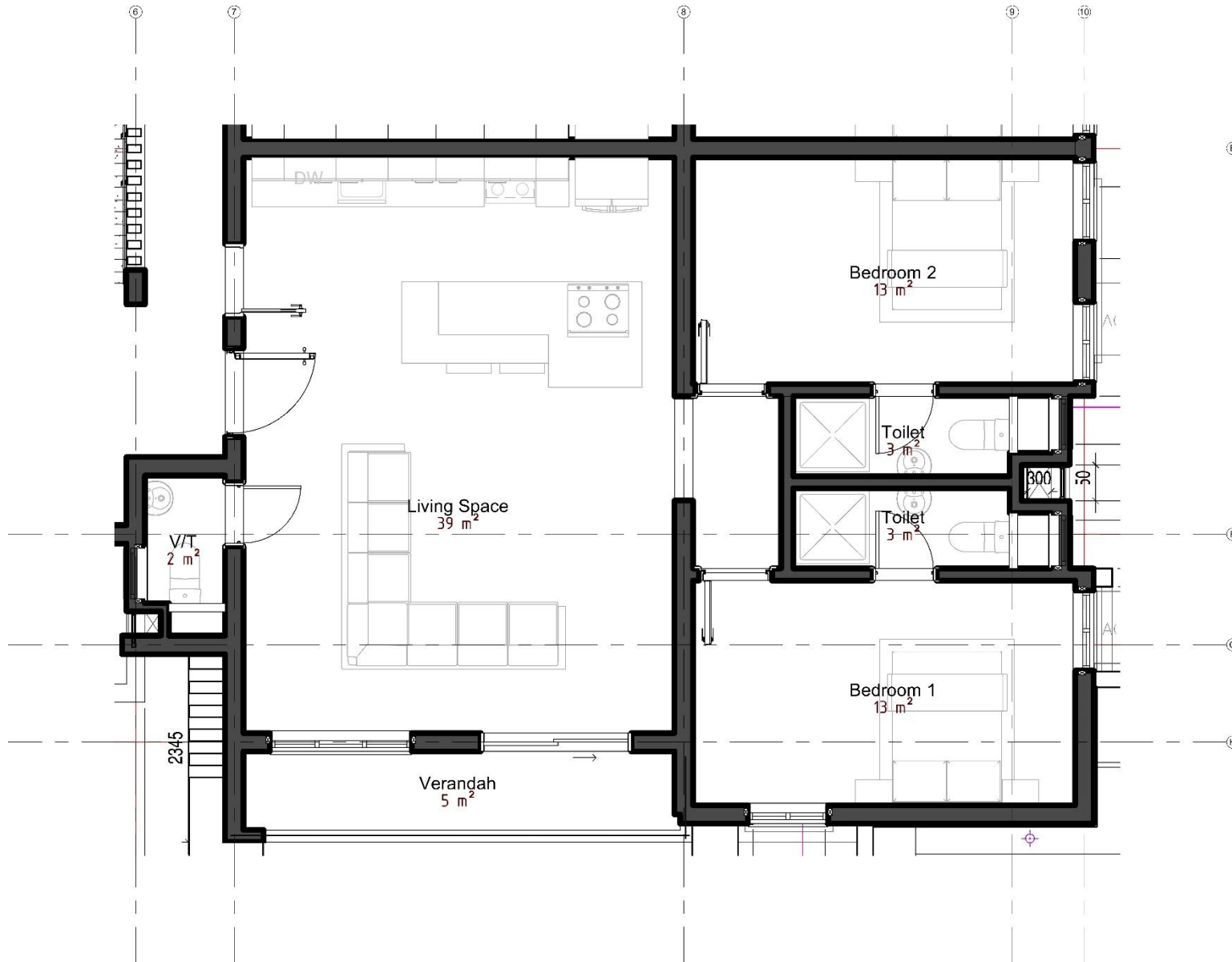
ASPiRE APARTMENTS



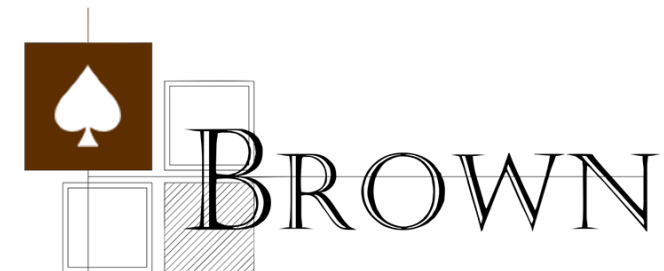
Callout: One bedroom
apartment on the First –
Fifth Floor



ASPiRE APARTMENTS



Callout: Two bedroom
apartment on the First –
Fifth Floor



ASPiRE APARTMENTS



Callout: Three bedroom
apartment on the First to
Fifth Floor

