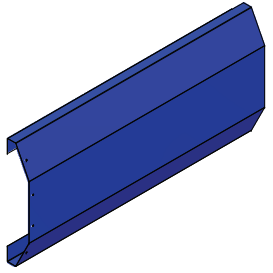
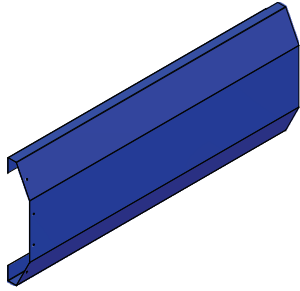


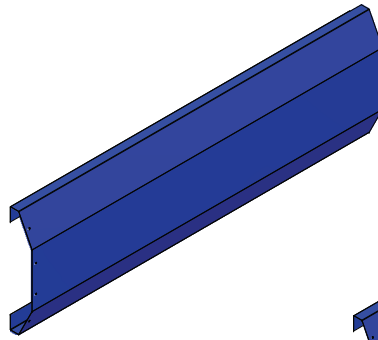
Attika Segment L = 882mm



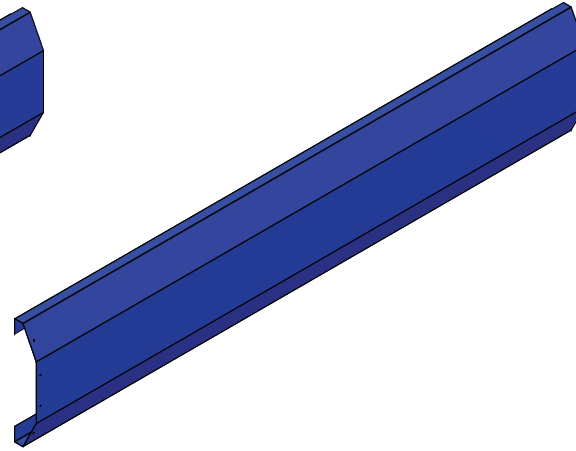
Attika Segment L = 1008mm



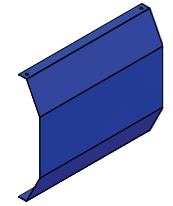
Attika Segment L = 1312mm



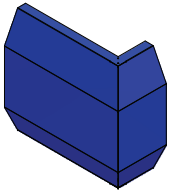
Attika Hauptsegment L = 2052mm



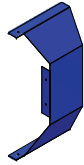
Attika Verbindungssegment L = 460mm



Attika Ecksegment "Außenecke"



Attika Ecksegment "Innenecke"

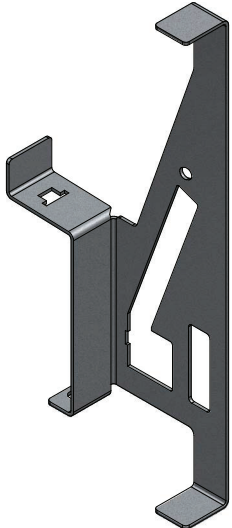


Niete 3,2x8 pop A2

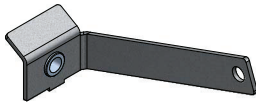


Teile für die Montage der Konsole:

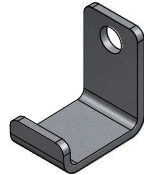
Attika Konsole



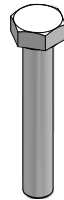
Keil



U-Profil



Schraube M8x50 8.8 Zn DIN933



Schraube M8x20 8.8 Zn DIN933



Mutter M8 Zn DIN934



Unterlegscheibe A8 Zn DIN125



Kanten ISO 13715							
Normen - ISO 14405 ISO 1101 ISO 8015	draft	Datum	Name	Standort	Material	-	mm
	Erstellt	-	-	-	Masse	-	
	Revision	-	-	-	Durch Länge Breite Höhe Dicke	-	
	Kontrolle	-	-	-	-	-	
Status -	Referenz Nummer / Revisions Nummer CTX_Montagehinweis_Attika CLASSIC /				Name	-	1:1
Thema Übersicht					Coin Code	-	1 / 9
					Dataset Typ	-	