

# Bock Lighting | Lighting for the Home.



2023



# Table of Contents

Bock Lighting for the Home

3	Customization Options	11	Fixtures for Bathroom
5	Integral LED Options	13	Fixtures for Exterior
7	Fixtures for Living Room		
9	Fixtures for Kitchen		



# Our Powdercoat + Cord Options

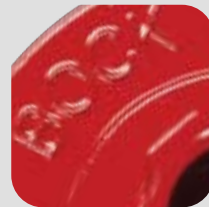
Bock Lighting for the Home



G0  
Black



G1  
White



G2  
Red



G3  
Yellow



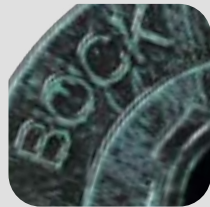
G4  
Blue



G5  
Green



G6  
Brown



G7  
Verdigris



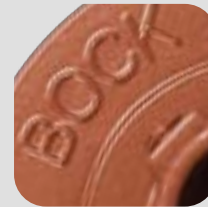
G8  
Dark Bronze



G9  
Silvadillo



G10  
Dark Green



G11  
Copper



G12  
Brushed  
Aluminum



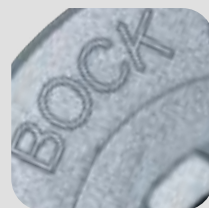
G13  
Tan



G14  
Gun Metal



G15  
Rust



G16  
Silver Wrinkle



G17  
Architectural  
Bronze



G18  
Rock Garden  
Green



G20  
Silver Cast



G21  
Hammered  
Copper



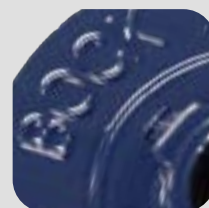
G22  
Dark Platinum



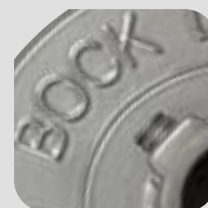
G23  
Silver Camaro



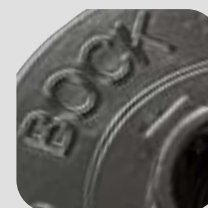
G24  
Orange



G25  
Navy Blue



G26  
Chrome



G27  
Matte Black



G28  
Sun Gold



G29  
Brilliant Blue



G30  
Glossy Black



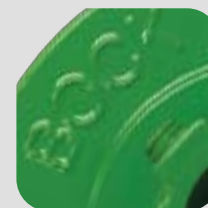
G50  
Neon Orange



G51  
Neon Pink



G52  
Neon Yellow



G53  
Neon Lime Green



Different Light  
for Different  
Ambiance.



# Integral LED

**1250LM    1500LM    1700LM    2000LM**

## Our LED Lumen Options

For Integral LED Fixtures we can offer 4 different lumen options: Plus an option for 0-10V dimming. Areas in your home with more activity require more light. Being intentional about brightness will give your home a classy and thoughtful feel.

**27K    30K    35K    40K    50K**

## Our LED Kelvin Options

With Integral LED we can also specify the warmness of the light. We have 5 options available to choose from. Areas of relaxation typically have warmer light and areas of productivity and focus has cooler light.







# Fixtures for Living Room Applications.

By Bock Lighting



The Living room, for the most part, is a general space. It doesn't exist for a specific reason but is meant to provide a certain level of comfort for gathering with family, easy productivity, and relaxing with your favorite show.

Lighting here should inspire feeling of coziness and familiarity. Both our storied RLM or industrial barebulb fixtures brings a classic charm to the space.

- 1 Larger Fixtures
- 2 Warmer Light
- 3 Bold Statement

**Part Number:** 516 / MED / DCMH  
**Material:** Aluminum  
**Price:** \$200+

8 Diameters

**Part Number:** Tourner/ MED  
**Material:** Steel | Bulbs not Included  
**Price:** \$200+

15 Diameters

**Part Number:** Celia14-S / LVGV1-1250LM  
**Material:** Aluminum  
**Price:** \$300+

3 Diameters

**Part Number:** Pierre-10 / LVGV1-1500LM  
**Material:** Aluminum, Opal White Glass  
**Price:** \$250+

2 Diameters







# Fixtures for Kitchen Applications.

By Bock Lighting



Lighting for the Kitchen can be approached in a lot of different ways. It depends entirely on your architectural layout, styling and how you like to interact with the space.

A common lighting approach in contemporary styled kitchens is to have small pendants hung over the Kitchen Island (or table) as a the primary light source.

- 1 Smaller Pendants
- 2 Neutral Light
- 3 Task Specific Lighting

## Rhea 8"

**Part Number:** Rhea-08 / MED / CHN-8FT  
**Material:** Aluminum, Acrylic, Steel  
**Price:** \$250+

## Small Jug Pendant

**Part Number:** Jug0812S-SM / MED  
**Material:** Smoked Glass | Bulbs not Included  
**Price:** \$150+

## Beretto 15"

**Part Number:** Beret15 / MED / 643  
**Material:** Aluminum  
**Price:** \$250+

## Pontil Pendant

**Part Number:** Pontil-P-18 / LVXV1-1250LM / 643  
**Material:** Aluminum  
**Price:** \$275+





# Fixtures for Bathroom Applications.

By Bock Lighting



Lighting for the Bathroom is a bit more straightforward than other domains of the home. This is not only due to the usual size constraints of the bathroom but also the expected styling.

Almost every bathroom presents itself as a place of cleanliness, relaxation and freshness. The lighting should match these qualities as well. Globes, chrome finishes and neutral colored light do well in almost any bathroom.

- 1 Small Fixtures
- 2 Cooler Light
- 3 Matching Finishes

## Pepper Sconce

**Part Number:** Pepper-3-12 / LVGV1-1250LM  
**Material:** Steel and Acrylic  
**Price:** \$200+

## Tanja 8" RLM

**Part Number:** Tanja-08 / LVFV1-1250LM  
**Material:** Aluminum  
**Price:** \$200+

## Novanta 6" Globe

**Part Number:** Pepper-3-12 / LVGV1-1250LM  
**Material:** Steel and Acrylic  
**Price:** \$200+

## Mur Sconce

**Part Number:** Mur-08-08 / MED  
**Material:** Steel | Bulbs not included  
**Price:** \$200+







# Some Fixtures for Exteriors

By Bock Lighting



Your home's exterior is the book cover to the novel that is domestic life. Exterior Lighting not only plays the practical role of ensuring safety and visibility; It also paints the picture that you would like your guests to see as they enter your world.

Pole top Lighting is a great way of intentionally creating pathways from the outside world to your own.

- 1 Large RLMs
- 2 Vaportights
- 3 Globe Fixtures

## Beretto Pole Top

**Part Number:** BERETTO / MED / PT-SC2

**Material:** Aluminum

**Price:** \$5006

## SB Dome Pole Top

**Part Number:** 516B / MED5 / PT-1

**Material:** Aluminum

**Price:** \$600+

## 518 Pole Top

**Part Number:** 518 / MED /PT-GN1

**Material:** Aluminum


**Price:** \$600+

## Globe Pole Top

**Part Number:** HQ00213-12 / MED / PT-SC1

**Material:** Aluminum

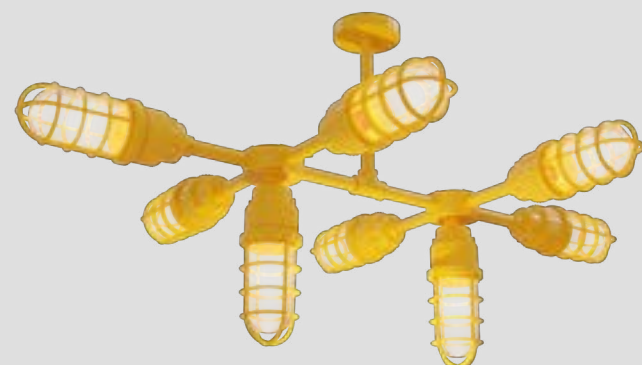
**Price:** \$500+

A close-up, slightly blurred photograph of a wooden pencil with a black eraser and a sharp lead tip, resting diagonally across a technical drawing. The drawing features various geometric shapes, lines, and handwritten annotations in black ink. The background is a dark, textured surface, possibly a desk or a book cover, which is also slightly blurred. The overall lighting is soft, creating a professional and focused atmosphere.

Check out some  
of our popular  
configurations









# Contact Us

W: [Bocklighting.com](http://Bocklighting.com)

E: [Sales@Bocklighting.com](mailto:Sales@Bocklighting.com)

P: 216-912-7050